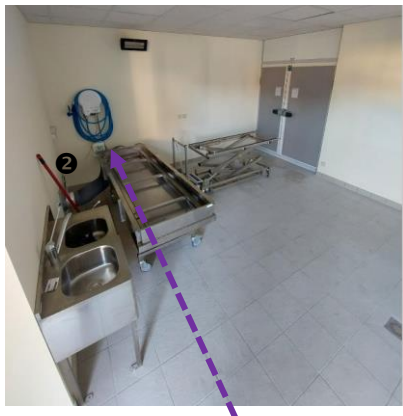


TECHNICAL DATA SHEET

TROLLEY ISOCART® Ref. 3630 WITH CAPTURE OF HARMFUL VAPOURS, ADJUSTABLE HEIGHT, VERSION WITH INTEGRATED TRAY (ONLY 60cm WIDTH)



Version with stretcher and central extraction - In this version the air will be captured at the end of the tank ❷ (to be connected to a disinfection extraction box)



Integration of the stretcher inside the tank, with a tilting panel at one end ❶ to close the tank and the air extraction manifold ❷ at the other end.

A trolley unit: A 304 stainless steel tank, size 200 x 80, consisting of 2 rails for sliding the stretcher, a removable tilting panel (to close the tank when the user is working), a 1.5 mm thick tank equipped with a Ø 70 mm drainage hole to the washing unit or the floor drain via a stretch hose of the Etiroflex type,

A lateral extraction system: (composed of 2 strips and a collector at one end) to capture harmful vapours at the source, coming from the toilet or conservation care operation, connected to a Ø 250 mm air evacuation elbow connected to a duct to a disinfection extraction box Ref. 502120/B (non-included),

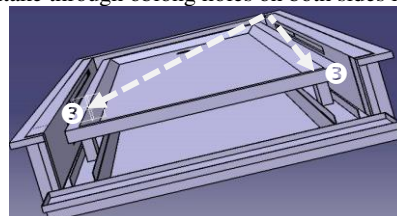
Trolley base: A 304 stainless steel with 4 wheels Ø 150mm (2 of which have brakes), height adjustable from 73 to 103 cm offering a very high robustness and rigidity, equipped with 2 column jacks allowing an adjustment of the height of the table via a control command, an emergency stop button, a battery with integrated charger (in full charge 30 cycles up and down).

Load capacity: 300 Kg.

Maintenance and cleaning: With soap and water and all chemicals compatible with 304 stainless-steel.

Dimension: (L x W x H): 216 x 80 x Mini 73 – Maxi 103cm.

Integrated tray with air extraction via 2 side extraction strips. ❸ Exhaust air intake through oblong holes on both sides in stainless steel



➤ **Product benefits:**

- **Incorporates a tray of width 60cm (only)** and length 190cm, suitable for toilet and conservation care, to avoid the user inhaling harmful vapours from the body and the care.
- Robust by its all-stainless steel 304 design (body up to 300kg), easy to use and easy to maintain, thanks to its 4 wheels and the 2 blockings the trolley remains very stable during its use,
- Flexible for the evacuation of waste water to a floor drain,
- Variable working height to adapt to the height of the operator in order to limit Musculoskeletal Trauma.
- **Optional:** External disinfection extraction box (allows autonomous air extraction if it is not possible to connect to the central extraction) Ref. 502120/B, average flow rate with filters between 0.3 and 0.4m/s (at the source), equipped with an EU2 pre-filter for dust collection, and an active carbon filter of 200g/m2 allowing air purification before its discharge to the outside (Filters to be changed every 1600 hours).

Optional: Disinfection extraction chamber Ref. 502120/B:

